



Apartment

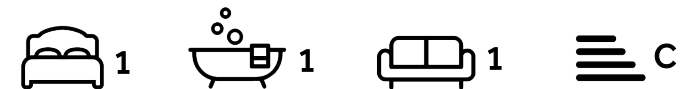
Marylebone High Street
Marylebone
London
W1U 4NY

£519 Per week

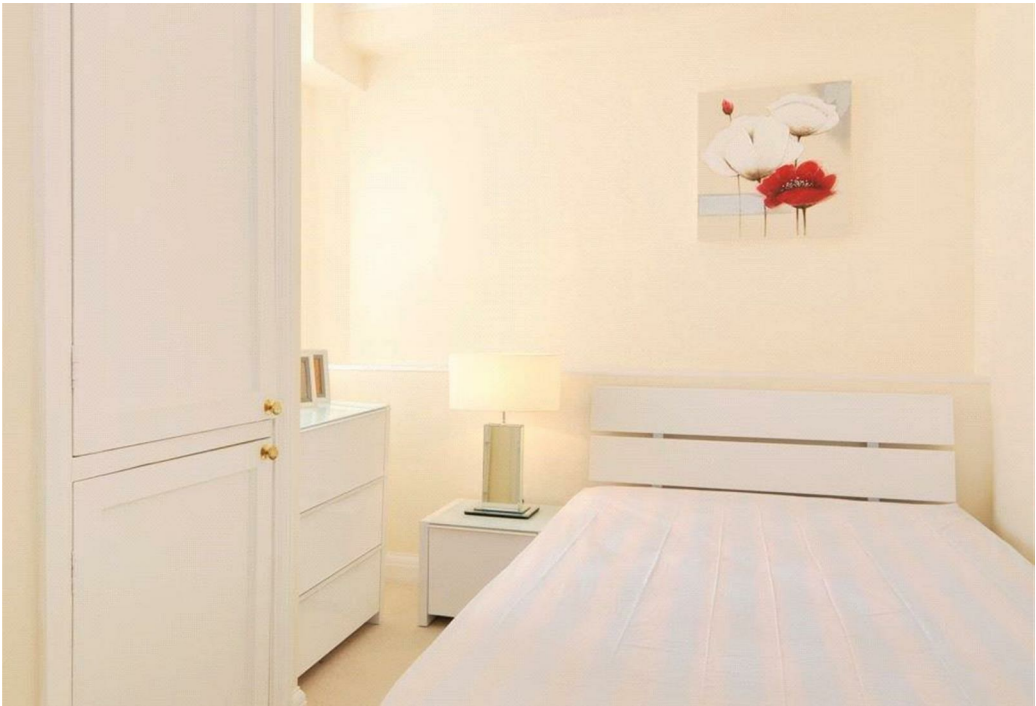
Council Tax Band: E

FEATURES

- Modern apartment
- One Bedroom
- Kitchen
- Wooden flooring
- Reception Room
- Lift



ADN
RESIDENTIAL



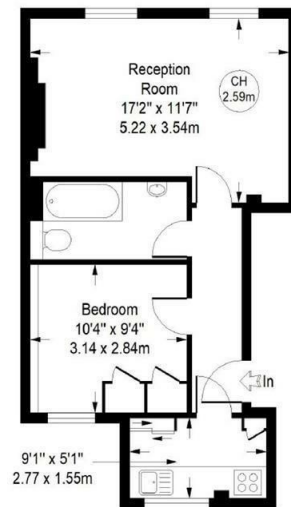
1 Bedroom Apartment located in London

A modern and well presented one bedroom apartment situated on the fourth floor (with lift) of a well presented period property located on Marylebone High Street. Benefits include wooden flooring, bright reception room and good storage throughout.

Marylebone High Street, W1U

Approximate Gross Internal Area = 432 sq ft / 40.13 sq m

Key :
CH - Ceiling Height



Fourth Floor

illustration for identification purposes only,
measurements are approximate, not to scale. (ID AA00194)



Energy Efficiency Rating		
	Current	Potential
Very energy efficient - lower running costs		
(92 plus) A		
(81-91) B		
(69-80) C	75	80
(55-68) D		
(39-54) E		
(21-38) F		
(1-20) G		
Not energy efficient - higher running costs		
England & Wales		EU Directive 2002/91/EC

Call us on

020 7407 5155

info@adnresidential.co.uk

www.adnresidential.co.uk

ADN
RESIDENTIAL

Agents Note: Whilst every care has been taken to prepare these particulars, they are for guidance purposes only. All measurements are approximate and are for general guidance purposes only and whilst every care has been taken to ensure their accuracy, they should not be relied upon and potential buyers are advised to recheck the measurements.